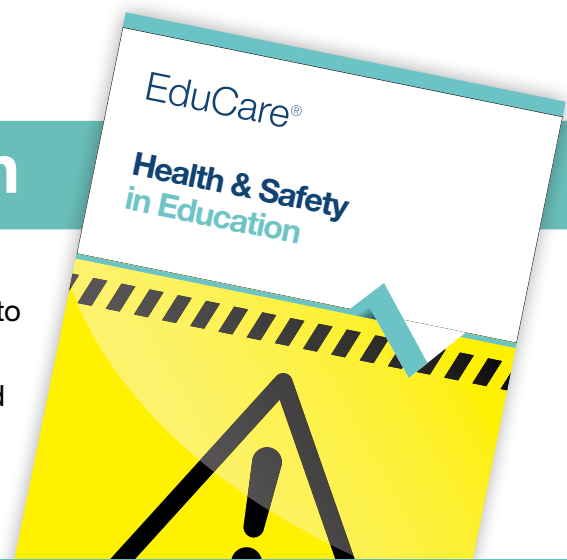


Health & Safety in Education

This programme will provide a thorough insight into health and safety, covering the essential facts to help you work more safely and contribute to the overall safety of all staff in your education setting. This programme is accredited by RoSPA, a leading expert in the prevention of accidents and also meets the Institution of Occupational Safety and Health (IOSH) 'Working Safely' Standards.



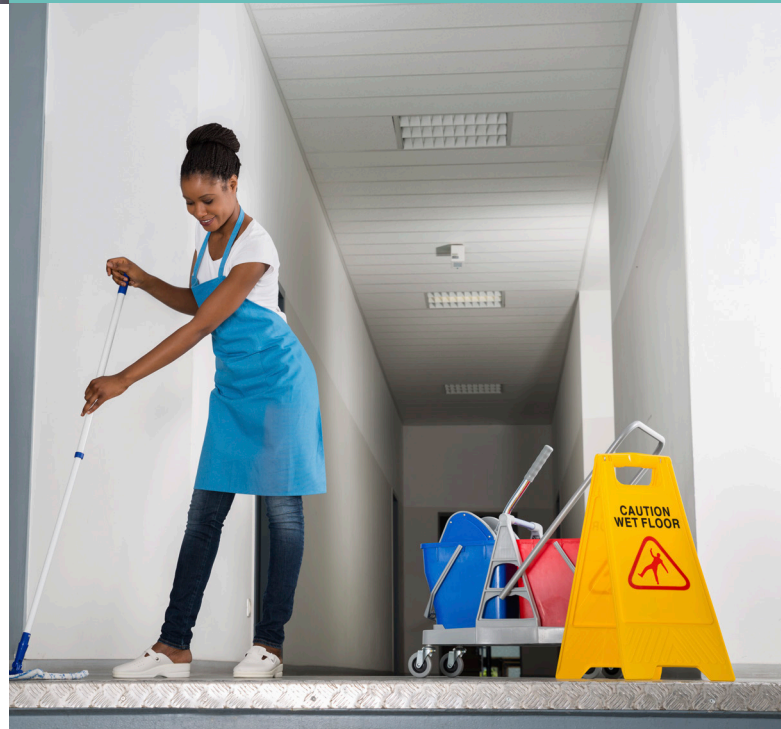
Key features

- Level 2 programme (as graded against the nationally accepted levels and equivalent to GCSE grades A* - C).
- Six modules with multiple choice questionnaires.
- Six CPD hours with a personalised downloadable certificate.
- This programme concludes with a final proficiency test that covers the content of all five modules.
- 80% pass mark.
- Optional narration of each module for accessibility.
- Additional resources for further learning and printable modules for future reference.

Programme objectives

This programme provides a thorough understanding to anyone working in an educational setting on health and safety.

1. Understand how to manage and control hazards to protect people at work.
2. Learn about risk assessment and how it is carried out.
3. Identify common safety hazards.
4. Recognise what employers must do to comply.
5. Understand hazards around working at height, manual handling, computer work stations and noise.
6. Understand how Health & Safety issues should be organised.
7. How to prevent accidents from happening by ensuring Health & Safety.
8. Understand what can go wrong and how to deal with unplanned events.



Target audience

This programme is relevant for all staff working in early years and the education sector.



Module Content:

1. An Introduction to Working Safely

- How to manage and control hazards.
- Protecting people at work and complying with the law.
- What a Risk Assessment is and how a Risk assessment is carried out.

2. Common Health and Safety Hazards Part 1

- Common safety hazards in the workplace.
- How to control common safety hazards.
- What employers must do to comply with COSHH.

3. Common Health and Safety Hazards Part 2

- Working at Height and The Working at Height Regulations.
- Manual handling and the 8 steps to a good handling technique.
- Computer work stations and key tips to using display screen equipment.
- The dangers of working around high levels of noise and guidance for employers on how to protect their staff.

4. Managing Health & Safety

- How health and safety issues can be organised and controlled.
- Public sector information publicised by the Health and Safety Executive and licensed under the Open Government Licence.

5. Accidents and Emergencies

- Accidents and emergencies and how to control them.
- How to prevent accidents from happening by ensuring safety precautions are in operation.
- What can go wrong, how to report and who to report to.
- The procedures needed to deal with unplanned events.

Why people choose us?

“ We have been using EduCare to develop the knowledge and skills of teams for over six years. Each month we send out around 110 Health & Safety programmes. A huge advantage of EduCare is the flexibility it offers. People can do them when and where they want; the night shift seems quite a popular time to study! ”

Liz Bennett– Accreditation & Assessment Senior Administrator, Mencap



www.educare.co.uk
 01926 436 211
 online@educare.co.uk

